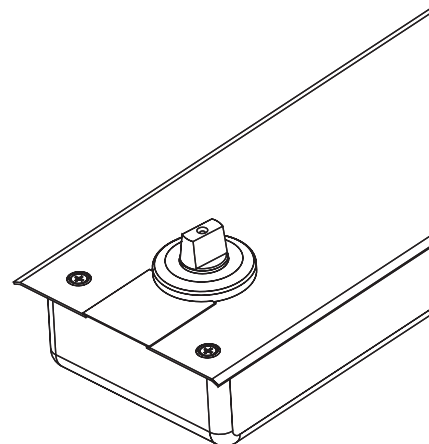


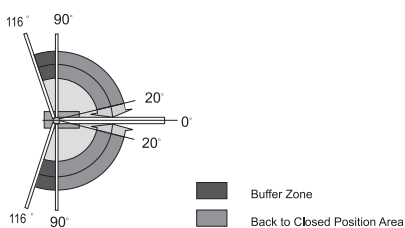
**STANLEY**

**FLOOR HINGE**

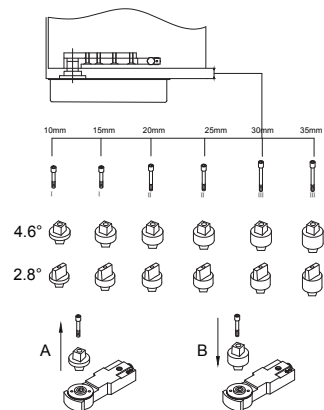
# ST-100E-XC



## Open Degree Indication



## Interchangeable Spindle



**StanleyBlack&Decker**

**Stanley Black & Decker**  
<http://www.stanleysecuritysolutions.com>

**FLOOR HINGE**

**Installation Manual**

Version 1

## Version 1

**STANLEY**

### Dimensions for installation

#### FEATURE

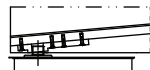
Center Hung,  
 Double action with  
 90° Stop-Device  
 Max. Open Degree 116°  
 Vertical Adjustment  
 Closing Force EN3

#### Installation instructions

##### 1 Wooden or metal doors Installation



Correct Installation

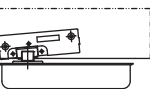


Wrong Installation

##### 2 Frameless Glass Door Installation

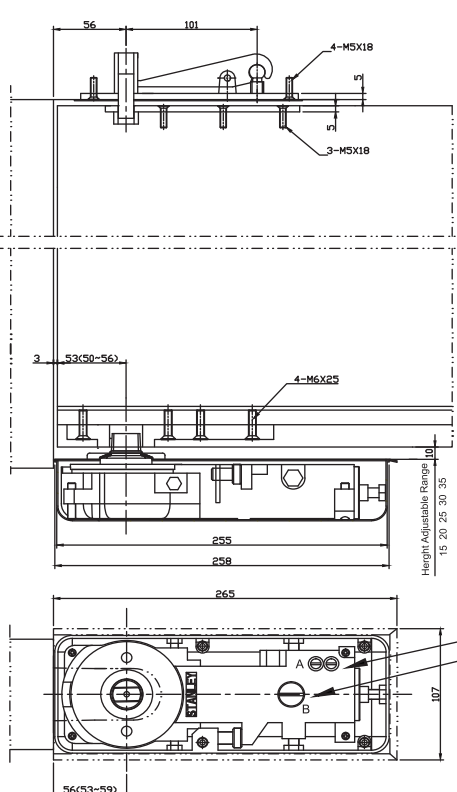


Correct Installation



Wrong Installation

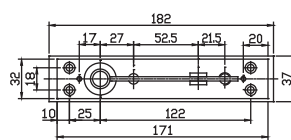
Notes:  
 Correct Installation:  
 Door goes smoothly and flexibly,  
 no noise.  
 Wrong Installation:  
 May have noise ,when door opens  
 or closes.



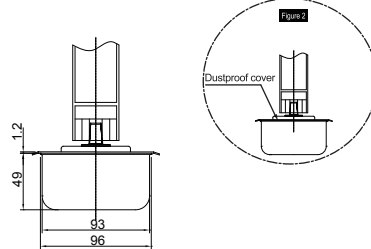
Model	Max Door Width (mm)	Max. Door Weight (kg)	Dimension (mm)
ST-100E-XC	900	100	255x93x49

## ST-100E-XC

### Top pivot (Top jamb side)



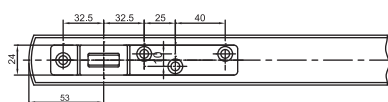
### Top Pivot (door side)



#### Notes

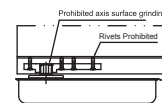
- Speed adjustment valve(A), used for micro adjustment, do not spin out.
- The label(B) can not be tore up, and the screw can not be spun out. The company shall not be responsible or liable for the consequences. Thank you for your cooperation.

### Bottom arm (Door side)



#### Precautions for installation

Figure 1



1. Do NOT grind the inclined plane of spindle if the door is too big to fit in the door frame, or it will cause noise when used, (Figure1)

2. Do NOT use rivet to fasten the bottom arm, The company shall not be responsible for the consequences, (Figure1)

3. The screws on the arm should be fixed firmly.

4. Do NOT remove the Dustproof cover on the spindle. Otherwise the company shall not be responsible for the oil leakage or any other consequences, (Figure2)

5. Fasten the screws after correctly adjust the position of floor hinge.

6. Using the speed adjustment valve to adjust the closing speed after installed correctly, Clockwise - (Fast-Slow), Counterclockwise - (Slow-Fast). Do NOT dose the door manually before set - up is complete.

7. Opening door to a degree larger than 116 is prohibited.